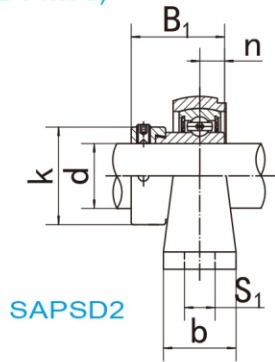
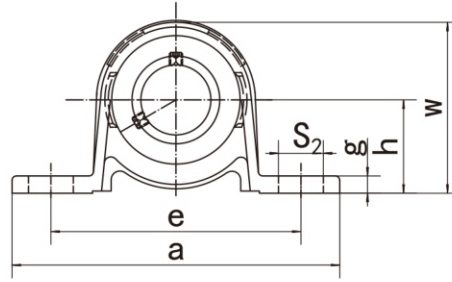


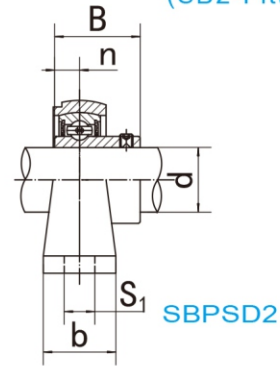
SAPSD2
(SA2-Fitted)



Flange Unit
(Light duty)



SBPSD2
(SB2-Fitted)



Unit NO.	Dimensions (mm / in.)											Bolt Size mm/in.	Bearing No.	Housing No.	Weight (kg)											
	d	h	a	e	b	S ₁	S ₂	g	w	B ₁	n															
SAPSD 201 201-8	12 1/2	30.2	114	87	25	11	16	6.5	54	28.6	6.5	3/8	SA201	PSD201	0.31											
SAPSD 202 202-9 202-10	15 9/16 5/8												1-3/16			4-1/2	3-7/16	63/64	7/16	5/8	1/4	2-1/8	1.1260	0.2559	SA202 SA202-9 SA202-10	PSD202
SAPSD 203 203-11	17 11/16																									SA203 SA203-11
SAPSD 204 204-12	20 3/4	33.3 1-5/16	125 4-15/16	97 3-13/16	27 1-1/16	11 7/16	16 5/8	7 9/32	71.5 2-13/16	31 1.2204	7.5 0.2953	3/8	SA204 SA204-12	PSD204	0.38											
SAPSD 205 205-13 205-14 205-15 205-16	25 13/16 7/8 15/16 1	36.5 1-7/16	130 5-1/8	100 3-15/16	29 1-1/8	11 7/16	16 5/8	7 9/32	67.5 2-21/32	31 1.2204	7.5 0.2953	3/8	SA205 SA205-13 SA205-14 SA205-15 SA205-16	PSD205	0.50											
SAPSD 206 206-17 206-18 206-19 206-20	30 1-1/16 1-1/8 1-3/16 1-1/4	42.9 1-11/16	156 6-5/32	119 4-22/32	33 1-5/16	14 9/16	21 13/16	8 5/16	79 3-1/8	35.7 1.4055	9 0.3543	1/2	SA206 SA206-17 SA206-18 SA206-19 SA206-20	PSD206	0.83											
SAPSD 207 207-20 207-21 207-22 207-23	35 1-1/4 1-5/16 1/3/8 1-7/16	47.6 1-7/8	165 6-1/2	127 5	35 1-3/8	14 9/16	21 13/16	9 11/32	90.5 3-9/16	38.9 1.5315	9.5 0.3740	1/2	SA207 SA207-20 SA207-21 SA207-22 SA207-23	PSD207	1.16											

Unit NO.	Dimensions (mm / in.)											Bolt Size mm/in.	Bearing No.	Housing No.	Weight (kg)											
	d	h	a	e	b	S ₁	S ₂	g	w	B	n															
SBPSD 201 201-8	12 1/2	30.2	114	87	25	11	16	6.5	54	22	6	3/8	SB201	PSD201	0.29											
SBPSD 202 202-9 202-10	15 9/16 5/8												1-3/16			4-1/2	3-7/16	63/64	7/16	5/8	1/4	2-1/8	0.8661	0.2362	SB202 SB202-9 SB202-10	PSD202
SBPSD 203 203-11	17 11/16																									SB203 SB203-11
SBPSD 204 204-12	20 3/4	33.3 1-5/16	125 4-15/16	97 3-13/16	27 1-1/16	11 7/16	16 5/8	7 9/32	71.5 2-13/16	25 0.9843	7 0.2756	3/8	SB204 SB204-12	PSD204	0.36											
SBPSD 205 205-13 205-14 205-15 205-16	25 13/16 7/8 15/16 1	36.5 1-7/16	130 5-1/8	100 3-15/16	29 1-1/8	11 7/16	16 5/8	7 9/32	67.5 2-21/32	27 1.0630	7.5 0.2953	3/8	SB205 SB205-13 SB205-14 SB205-15 SB205-16	PSD205	0.48											
SBPSD 206 206-17 206-18 206-19 206-20	30 1-1/16 1-1/8 1-3/16 1-1/4	42.9 1-11/16	156 6-5/32	119 4-22/32	33 1-5/16	14 9/16	21 13/16	8 5/16	79 3-1/8	30 1.1811	8 0.3150	1/2	SB206 SB206-17 SB206-18 SB206-19 SB206-20	PSD206	0.76											
SBPSD 207 207-20 207-21 207-22 207-23	35 1-1/4 1-5/16 1/3/8 1-7/16	47.6 1-7/8	165 6-1/2	127 5	35 1-3/8	14 9/16	21 13/16	9 11/32	90.5 3-9/16	32 1.2598	8.5 0.3364	1/2	SB207 SB207-20 SB207-21 SB207-22 SB207-23	PSD207	1.03											

Note: To specify relubricatable units, add "G" suffix, (e.g., SBPSD205-16G)